

AN ASSESSMENT OVERVIEW

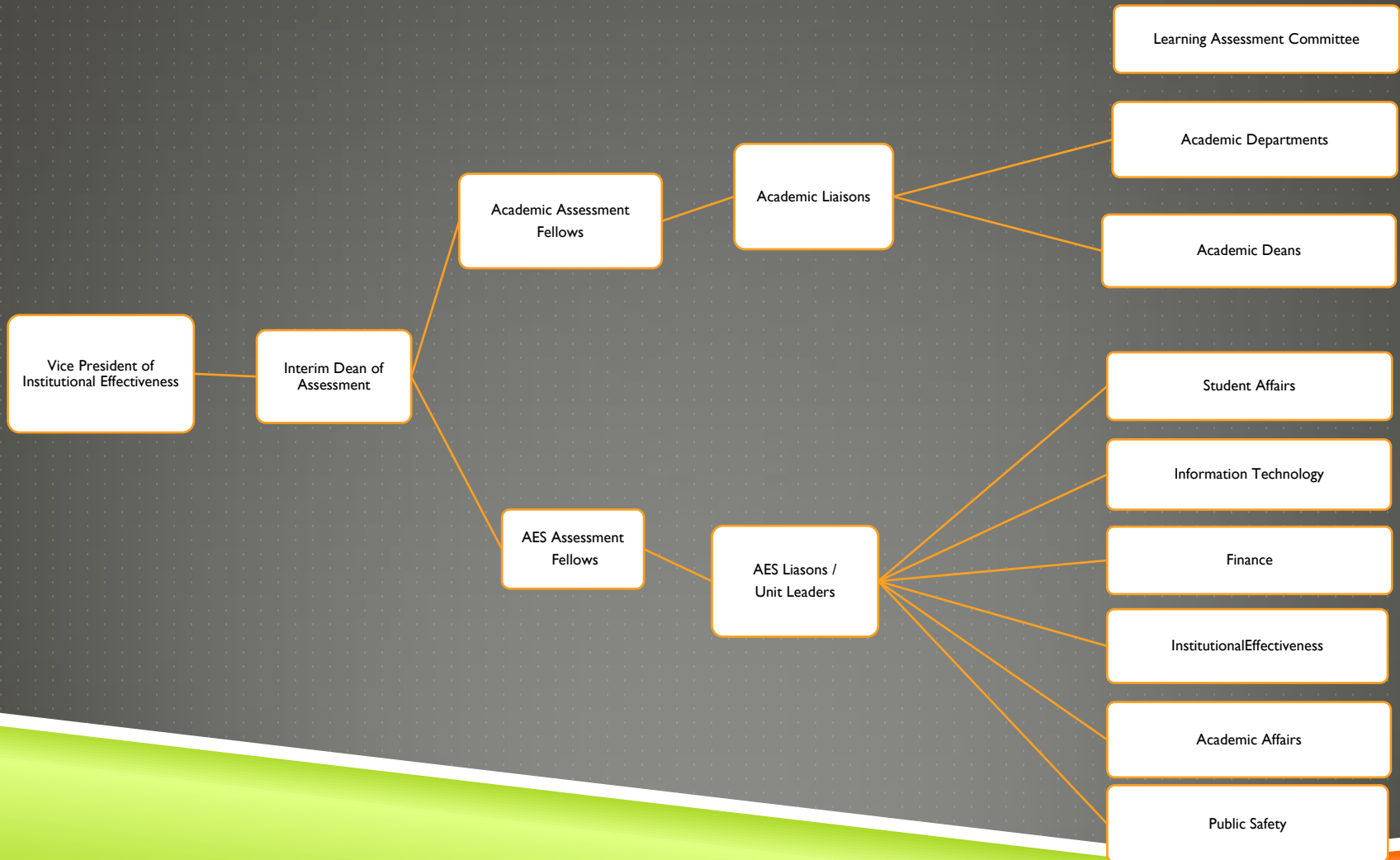
CIE Fall 2016 Workshop Series

Gail Fernandez

Interim Dean of Assessment



ORGANIZATIONAL CHART OF ASSESSMENT



LEARNING OUTCOMES ASSESSMENT

- ▶ Faculty Driven
- ▶ Program Level Outcomes Assessment & Integrated Foundational Knowledge
 - ▶ Are students learning what we say we are teaching?
- ▶ Two-year Assessment Cycle

AES OUTCOMES ASSESSMENT

- ▶ Staff Driven
- ▶ Two Year Cycle
 - ▶ Program/Unit's Core Outcomes
 - ▶ What are you trying to do?
 - ▶ How well are you doing it?

NEW MSCHE STANDARD

(old) Standard 14:

Assessment of Student Learning
“Assessment of student learning demonstrates that, at graduation, or other appropriate points, the institution’s students have knowledge, skills and competencies consistent with institutional and appropriate higher education goals.”

(new) Standard V: Educational Effectiveness Assessment

“Assessment of student learning and achievement demonstrates that the institution’s students have accomplished educational goals consistent with their program of study, degree level, the institution’s mission, and appropriate expectations for institutions of higher education.”

NEW MSCHE STANDARD

(old) Standard 7: Institutional Assessment

“The institution has developed and implemented an assessment process that evaluates its overall effectiveness in achieving its mission and goals and its compliance with accreditation standards.”

(new) Standard 4: Support of the Student Experience

Periodic assessment of the effectiveness of ...

Continuously assess and improve

ASSESSMENT CYCLE

- ▶ Semester One:
 - ▶ Create assessment plan
- ▶ Semester Two:
 - ▶ Choose assessment tools, timeline and desired results
- ▶ Semester Three:
 - ▶ Collect data & data analysis
- ▶ Semester Four:
 - ▶ Sharing results and next steps

ASSESSMENT TOOLS

▶ Direct Measures:

- ▶ Licensure exams
- ▶ Presentations
- ▶ Essays
- ▶ Exams & Quizzes
- ▶ Surveys
- ▶ Process Improvements

▶ Indirect Measures

- ▶ Focus Groups: students, faculty, employers
- ▶ Student Reflection Papers
- ▶ Surveys: students, faculty, employers

RESOURCES

- ▶ Assessment Fellows
- ▶ Interim Dean of Assessment
- ▶ Vice President of Institutional Effectiveness
- ▶ Institutional Research
- ▶ Center for Institutional Effectiveness website:
<http://bergen.edu/about-us/institutional-effectiveness/assessment/>
- ▶ Assessment Handbook

FOR MORE INFORMATION

- ▶ Yun Kim, Vice President of Institutional Effectiveness, yunkim@bergen.edu
- ▶ Gail Fernandez, Interim Dean of Assessment, gfernandez@bergen.edu
- ▶ Assessment Fellows:
 - ▶ Joanna Campbell, jcampbell@bergen.edu
 - ▶ Maureen Ellis-Davis, mellisdavis@bergen.edu
 - ▶ Amarjit Kaur, akaur@bergen.edu
 - ▶ Ilene Kleinman, ikleinman@bergen.edu
 - ▶ Jill Rivera, jrivera@bergen.edu
 - ▶ Sony Tiwari, stiwari@bergen.edu



Thank you!

A decorative graphic at the bottom of the slide consists of two overlapping, irregular shapes. The upper shape is a vibrant lime green, and the lower shape is a bright orange. Both shapes have a white outline and a slight gradient, giving them a three-dimensional appearance. They are positioned against the dark grey background of the slide.