

ASSESSMENT METHODS

Dr. Gail Fernandez

Prof. Melissa Krieger

Center for Institutional Effectiveness

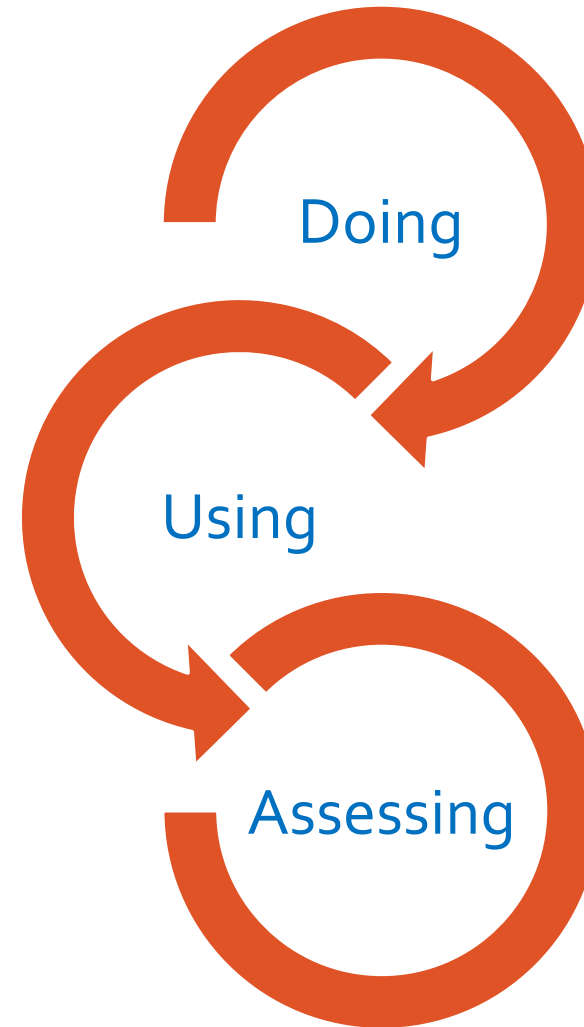
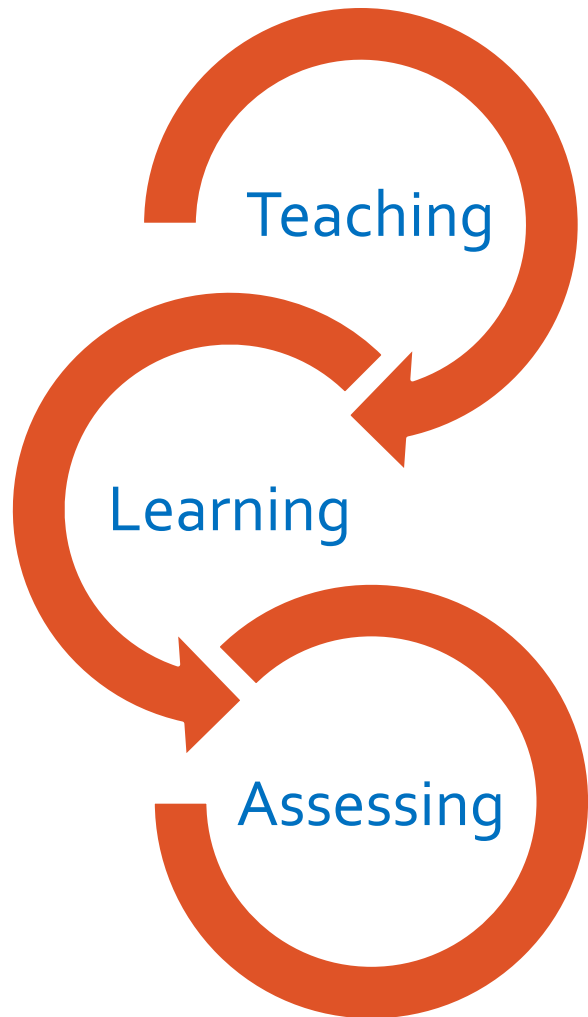
February 2019

Assessment Methods Workshop

Outcomes

- To have an understanding of various assessment tools.
- To be able to identify appropriate assessment tools for your discipline / unit.





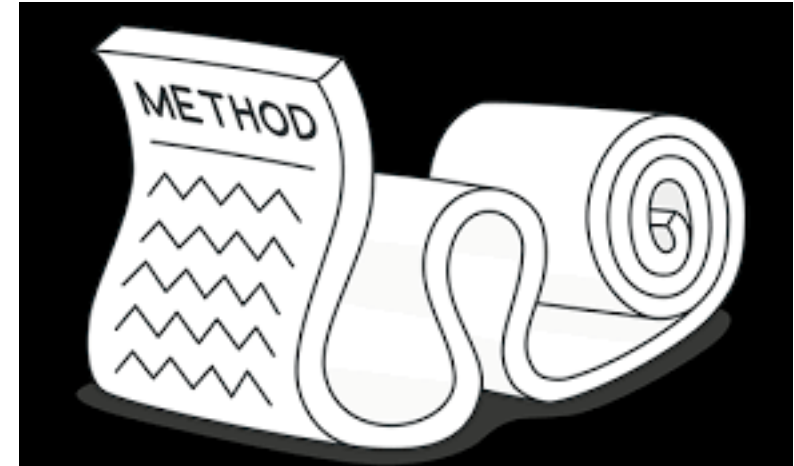
What are some assessment strategies that you use in your classroom? In your unit?



Choosing an Assessment Method

Consider...

- The skill or knowledge that will be assessed
- Assessment methods that have yielded past success
- The data/information that will be collected
- The possible outcome and use of the information collected
- The sample size or length of time for the project
 - Is the sample and length of time significant to yield reliable data?



Direct Measures of Student Learning

Assess learning by collecting and analyzing numeric data using statistical techniques and rubrics

- Student capstone projects
- Pass rates or scores on licensure or certification tests
- Student presentations
- Case study analyses
- Examinations & quizzes
- Observation of field work, service learning, or clinical experience

Direct Measures of Administrative and Educational Support (AES) Units

- Create a rating scale for a process or the completion of a task
- Collect quantitative data related to the work of your unit
- Use information that is already collected for writing reports and other documents (ex. Job placement data from Career Services)

Indirect Assessment Methods: Collecting Qualitative Data

Rely on descriptions rather than using numerical data

- Surveys of students, employers, alumni, faculty, staff (ability to do something/satisfaction with a service/process)
- Focus group interviews of students, faculty, staff, employers
- Reflection papers

Planning an Assessment Project

Sample Size

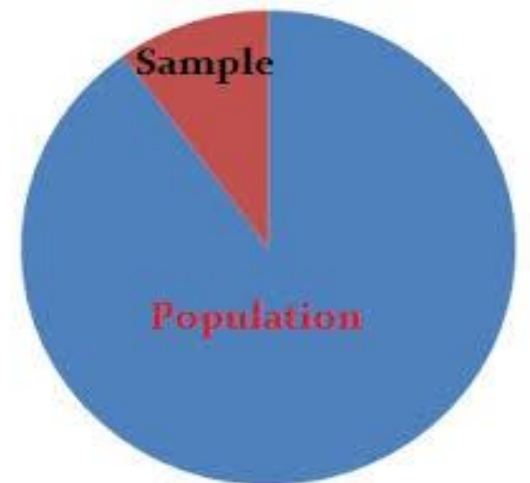
For Academic Programs

- Gather evidence from a variety of classes (face to face, on-line, day, evening, full-time and part-time faculty)

For Administrative and Educational Support (AES) Units

Consider:

- Who will provide evidence for your project?
- How will you find your evidence?



Desired Results

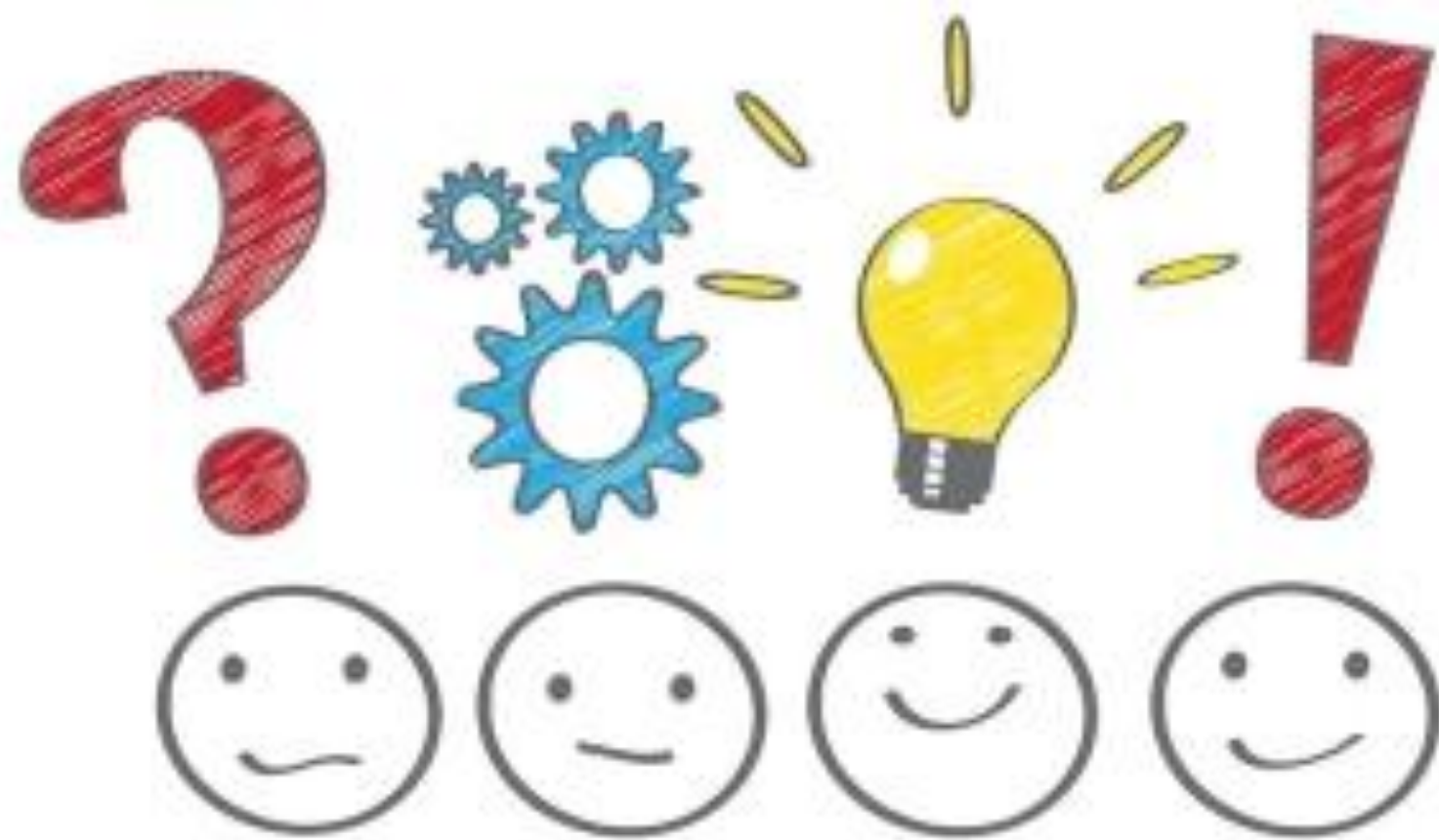
What level of performance are you looking for?

- By how much (% , time) will a process improve?
- What is the level of satisfaction with a service?
- What percentage of students will achieve a score of _____ % on the assessment?
- What percentage of students will achieve at least a (numeric or letter grade) of _____ on an assessment?



Assessment Tips

- Be specific about what you want to know.
- Be clear about why you want to know it.
- Be clear about what you plan to do with the results.
- Make sure the assessment tool you choose is the right tool to get the information needed.



For More Information

Interim Dean of Assessment:

- Gail Fernandez, gfernandez@bergen.edu

Assessment Fellows:

- Joanna Campbell, jcampbell@bergen.edu
- Maureen Ellis-Davis, mellisdavis@bergen.edu
- Amarjit Kaur, akaur@bergen.edu
- Ilene Kleinman, ikleinman@bergen.edu
- Melissa Krieger, mkrieger@Bergen.edu
- Jill Rivera, jrivera@bergen.edu